

Voodoo Birds - Stage Plot

Drum Overhead Left— mic

Drum Overhead Right— mic



Snare Drum— mic

Kick Drum— mic



Timbales— mic

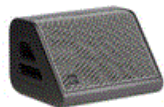


Congas— mic

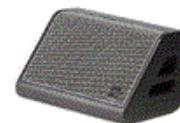
Roland — direct



Hammond — direct



Monitor 5



Monitor 6

Guitar Amp— mic



Saxophone— mic



Trumpet— mic



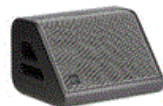
Trombone— mic



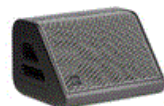
Bass Amp— direct



Vocal 1—mic



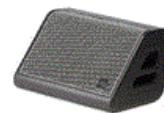
Monitor 1



Monitor 2



Vocal 2—mic



Monitor 4



Vocal 3—mic



Monitor 3

Voodoo Birds - Input List

Channel*	Instrument	Person	Connections Needed	Notes
1	Vocals	Ben	XLR to board	Microphone will be provided (Sennheiser e945), XLR cable and boom mic stand will be needed. *** Note: this mic will also be used for a harmonica on two songs ***
2	Vocals	KC	XLR to board	SM58 (or equivalent) and microphone stand will be needed
3	Vocals	Roman	XLR to board	SM58 (or equivalent) and boom microphone stand will be needed
4	Electric Guitar	Ben	Power at front of stage for pedal board and Amp; one XLR microphone signal	One suitable microphone & XLR cable for Fender Twin Guitar Amp will be needed
5	Bass Guitar	Roman	XLR to board	Direct Box output signal to board will be needed
6	Roland Keyboard	Eric	1 single ¼" line out (possible stereo output option), and one power connection	¼" or XLR cable to board will be needed
7	Hammond Digital Organ	Eric	1 single ¼" (or XLR) line out (possible stereo output option), and one power connection	¼" or XLR cable to board will be needed
8	Trumpet	Joe	XLR to board	Microphone will be provided only the XLR cable to the board will be needed
9	Saxophone	Ethan	XLR to board	SM57 (or equivalent) and boom microphone stand will be needed
10	Trombone	Dave	XLR to board	Microphone will be provided only the XLR cable to the board will be needed
11	Bass Drum	Chris	XLR to board	Microphone and stand will be needed
12	Snare	Chris	XLR to board	Microphone and stand will be needed
13	Drum Overhead L	Chris	XLR to board	Microphone and stand will be needed
14	Drum Overhead R	Chris	XLR to board	Microphone and stand will be needed
15	Congas	Doug	XLR to board	(clip on mic can be provided) Microphone and stand will be needed as a backup
16	Timbales	Doug	XLR to board	(clip on mic can be provided) Microphone and stand will be needed as a backup

* Reference only; Sound Engineer can determine which board channel to assign for each signal

Voodoo Birds - Monitor Requirements

Monitor	Instrument	Location	Notes
1	Vocals (band mix)	Front Stage Left	To be placed in front of guitar vocal mic (Ben), vocals boosted, but mix of band also required
2	Vocals (band mix)	Front Stage Middle	To be placed in front of second vocal mic (KC), vocals boosted, but mix of band also required
3	Vocals (band mix)	Front Stage Right	To be placed in front of second vocal mic (Roman), vocals boosted, but mix of band also required
4	Horns (full band mix)	Middle Stage	Primarily for horns, full band mix with horns boosted
5	Full band mix	Back Stage Left	Primarily for keyboard, horns, and drums to hear
6	Full band mix (with congas slightly boosted)	Back Stage Right	Primarily for congas and drums to hear